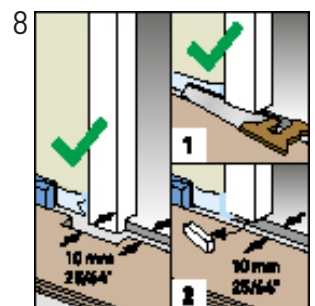
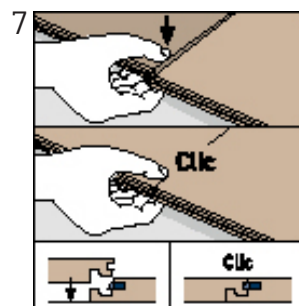
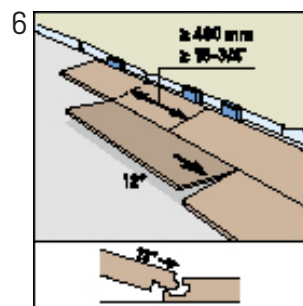
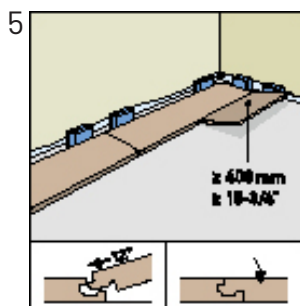
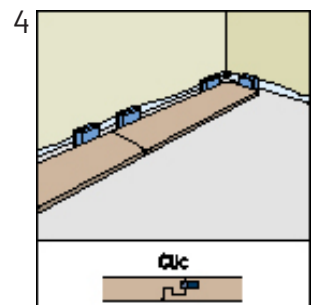
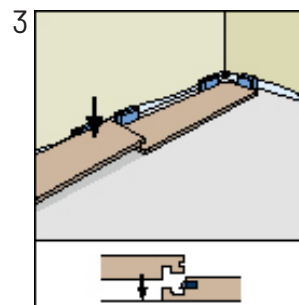
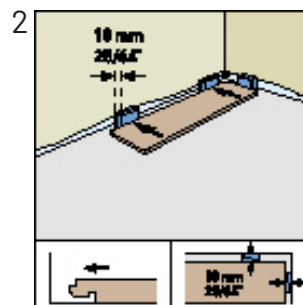
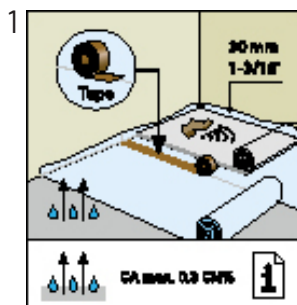
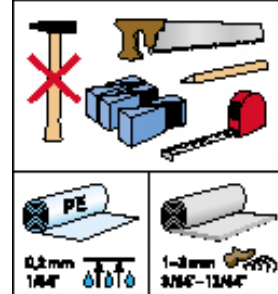
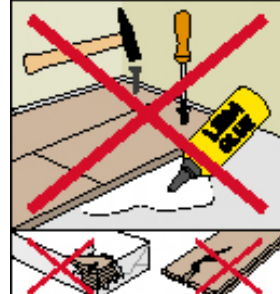
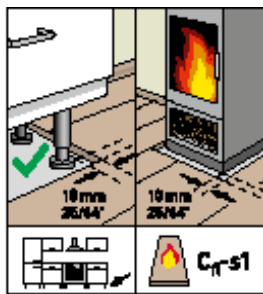
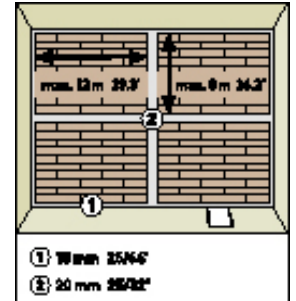
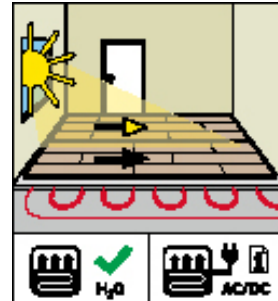
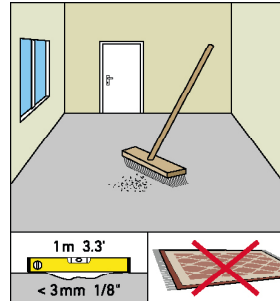
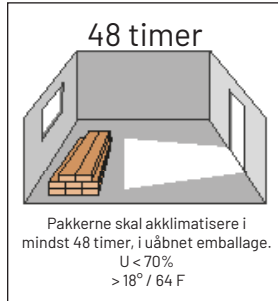


# MONTERINGSVEJLEDNING

## LAMINATGULV MED 5G CLIC (MAMMUT, MAMMUT EXCLUSIVE, ADVANCED OG HERITAGE)

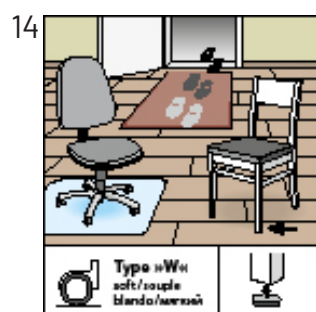
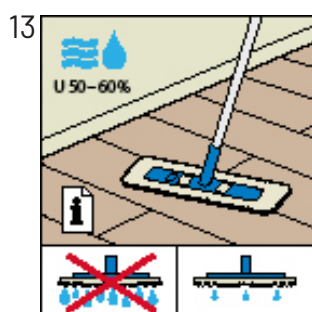
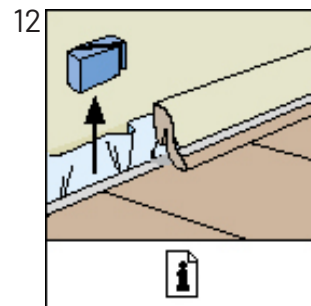
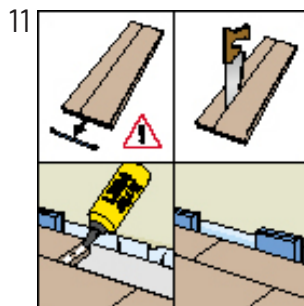
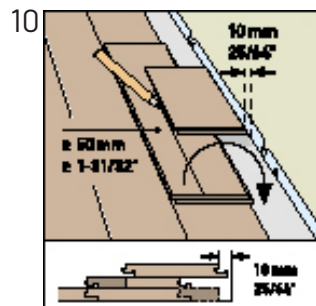
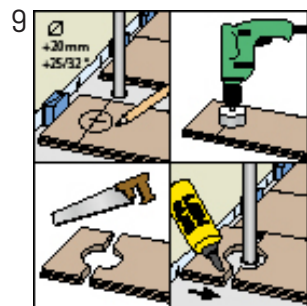
Læs altid monteringsvejledningen grundigt inden montering. Vejledning findes også i pakken.



# MONTERINGSVEJLEDNING

## LAMINATGULV MED G5 CLIC (FORTSAT)

Læs altid monteringsvejledningen grundigt inden montering. Vejledning findes også i pakken.



Optagning eller nedrivning af gulvet

I gulvets levetid er det vigtigt at den relative luftfugtighed er 40-70% og overfladetemperaturen ikke overstiger 27°C.



**Wallmann**

Wallmann A/S

Sabroesvej 20B • 8600 Silkeborg • 8770 0900 • wallmann.dk • info@wallmann.dk

